



THINKHQ/METRO NEWS POLL

ALBERTA'S POLITICAL LANDSCAPE

NOVEMBER 2017

Copyright © 2017. All contents of this document are the exclusive property of ThinkHQ Public Affairs Inc.
All rights are reserved.

Permission to reproduce, redistribute and/or refer to our copyrighted property is granted on the condition that all such use
gives proper attribution to the "ThinkHQ/Metro News Poll".

www.thinkhq.com | 1

RESEARCH METHODOLOGY



- Study fielded via online research panel
 - Field dates: November 9 to 13, 2017
 - Panel source: Voice of Alberta & Angus Reid Forum
- n=1314
- Weighted to reflect gender, age and region of Alberta population according to Stats Canada
- This online survey utilizes a representative but non-random sample, therefore margin of error is not applicable. However, a probability sample of this size would yield a margin of error of +/- 2.7 percentage points at a 95% confidence interval.
- Accuracy of sub-samples of the data decline based on sample sizes

REGIONAL SAMPLE SIZES AND MARGINS OF ERROR



	Total Interviews (Unweighted) (n)	Total Interviews (Weighted) (n)	Margin of Error (Associated with a probability sample of this size)
ALBERTA TOTAL	1314	1314	+/- 2.7
Calgary	481	440	+/- 4.5
Edmonton	368	401	+/- 5.1
North	123	170	+/- 8.8
Central	174	158	+/- 7.4
South	168	145	+/- 7.6



ALBERTA'S POLITICAL LANDSCAPE

NOVEMBER 2017

Copyright © 2017. All contents of this document are the exclusive property of ThinkHQ Public Affairs Inc.
All rights are reserved.

Permission to reproduce, redistribute and/or refer to our copyrighted property is granted on the condition that all such use
gives proper attribution to the "ThinkHQ/Metro News Poll".

www.thinkhq.com | 4

ALBERTA'S POLITICAL LANDSCAPE

-Is "FORTRESS EDMONTON" CRUMBLING ON THE NDP?



For many political observers, the fact that the provincial NDP are now trailing province-wide in voter intentions may not come as a surprise - the economy remains stubbornly sluggish and the UCP has coalesced right-of-centre voters under one party banner. However, our November ThinkHQ/Metro Provincial Politics survey reveals deeper problems for the governing party.

- If an election were held tomorrow, the NDP would garner 30% of the vote across the province, well back of the UCP at 54% and well behind their returns in the last provincial election (41%)
- Meanwhile the Alberta Party stands at 9% of the decided vote province-wide today, followed by the Liberals at only 5%
- Fully 18% of Alberta voters are undecided about who they will support in the next election

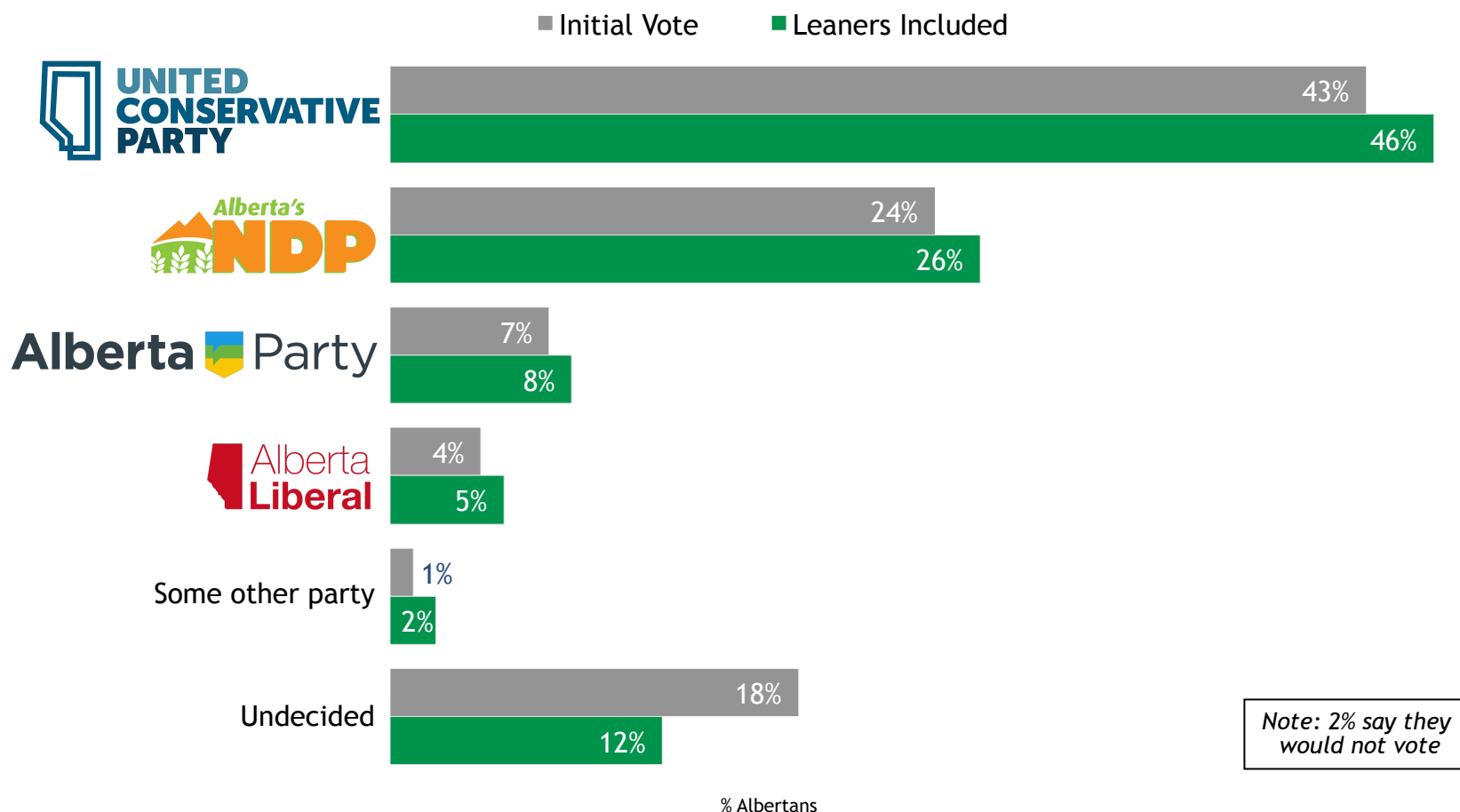


Most interesting in this new wave of political tracking is voter intentions in the Capital Region - "Fortress Edmonton" may be crumbling on the NDP.

- For the first time since they were elected in 2015, the NDP DO NOT have a lead among voters in the Edmonton-region. They are currently tied with UCP at 42% of the decided vote, followed by the Alberta Party (9%) and the Liberals (6%)
- The NDP continue to hold a substantial edge (13 percentage points) within Edmonton city limits, however this suggests that in surrounding communities such as St. Albert, Leduc and Sherwood Park, they are actually trailing the UCP

PROVINCIAL POLITICAL HORSERACE

If a provincial election were held today, which one of the following parties' candidate would you, yourself, be most likely to support?



PROVINCIAL POLITICAL HORSERACE

-DECIDED VOTE



If a provincial election were held today, which one of the following parties' candidate would you, yourself, be most likely to support?



54%



30%

Alberta Party

9%



5%

Some other party

2%

Initial Undecided
18%

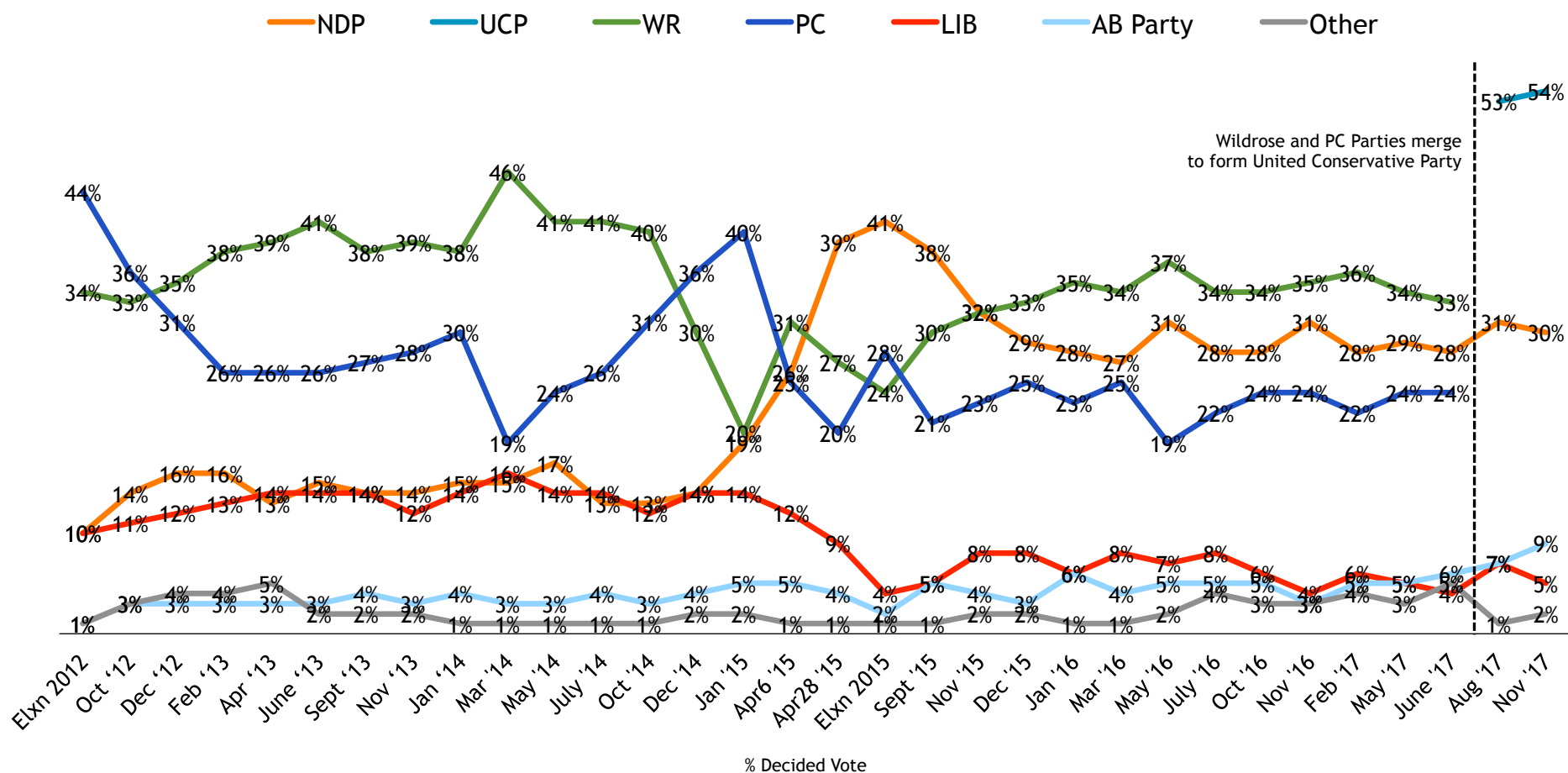
% Decided Voters
(n=1128)

PROVINCIAL POLITICAL HORSERACE

-THQ TRACKING







If a provincial election were held today, which one of the following parties' candidate would you, yourself, be most likely to support?



Is 'FORTRESS EDMONTON' CRUMBLING ON PROVINCIAL NDP?



	ALBERTA TOTAL			EDMONTON CMA			EDMONTON PROPER		
DECIDED VOTE	Aug '17 (958)	Nov '17 (1128)	Change	Aug '17 (297)	Nov '17 (327)	Change	Aug '17 (226)	Nov '17 (245)	Change
	31%	30%	-1	46%	42%	-4	49%	47%	-2
	53%	54%	+1	36%	42%	+6	33%	34%	+1
	7%	5%	-2	12%	6%	-6	11%	7%	-4
	7%	9%	+2	4%	9%	+5	5%	10%	+5
OTHER	1%	2%	+1	2%	2%	-	2%	2%	-



Want to have your say about topics and issues that affect Albertans?

Voice of Alberta is a rapidly growing online community of Albertans who are interested in shaping the future of their community, province and nation. We bring current political, business and social issues to you and ask for your views. In return, we share the results in publications like the one you're reading now, through traditional and social media, and in member-exclusive newsletters.

Join and have your say at:
www.voiceofalberta.com

For more information, contact:
Marc Henry, President
ThinkHQ Public Affairs Inc.
MLH@ThinkHQ.ca
(587) 774-2395

Copyright © 2017. All contents of this document are the exclusive property of ThinkHQ Public Affairs Inc.
All rights are reserved.

Permission to reproduce, redistribute and/or refer to our copyrighted property is granted on the condition that all such use gives proper attribution to the "ThinkHQ/Metro News Poll".